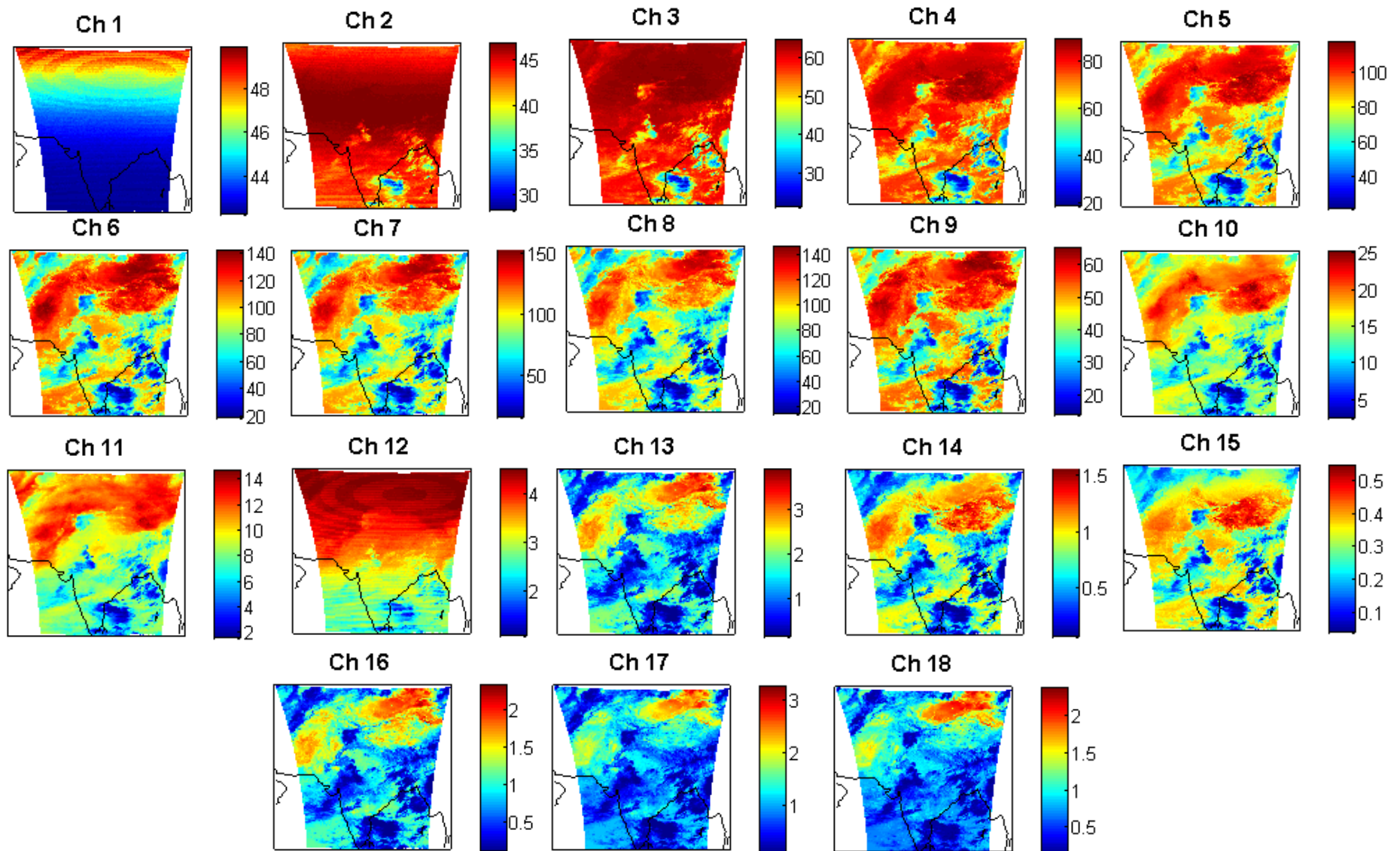


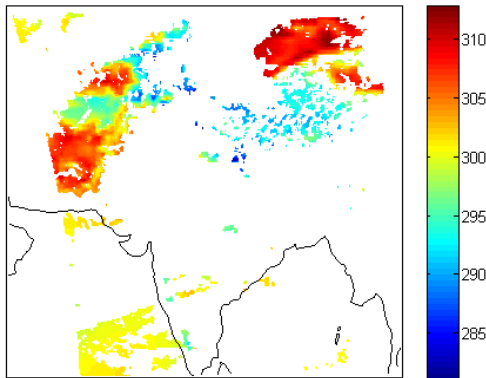
INSAT-3D Sounder Radiances ($\text{mW}/\text{m}^2/\text{sr}/\text{cm}^{-1}$)

10 August 2013 0331UTC

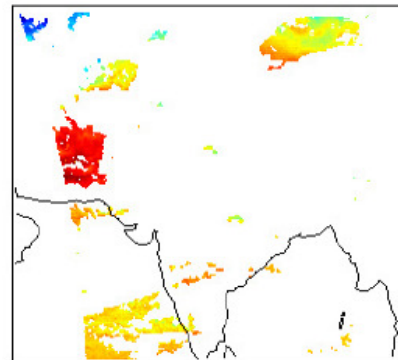


Temperature Profile (K) (10 August 2013 0331 UTC)

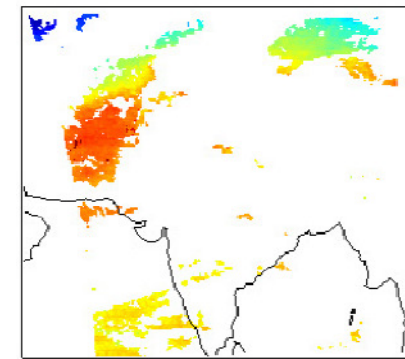
Surface skin temperature



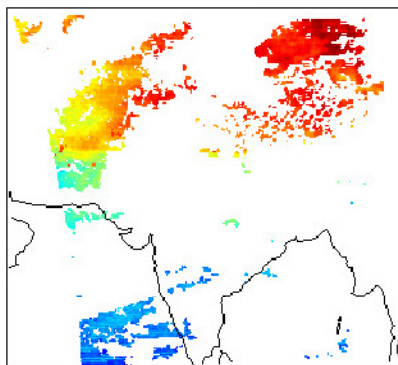
850 hPa



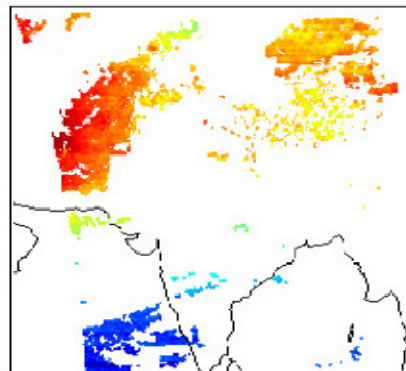
700 hPa



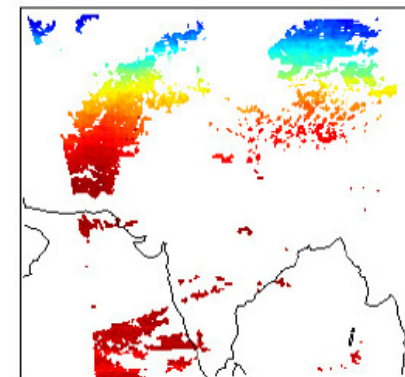
500 hPa



250 hPa

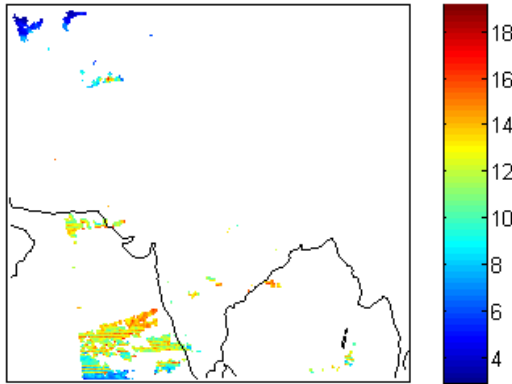


100 hPa

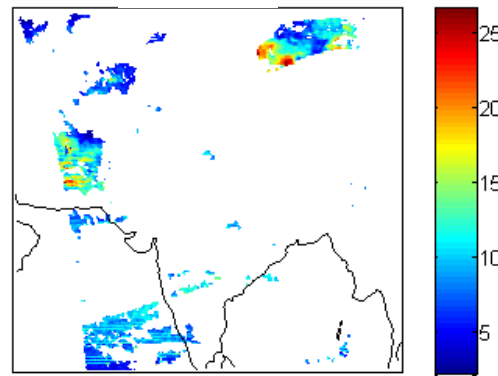


Humidity Profile (g/kg) (10 August 2013 0331 UTC)

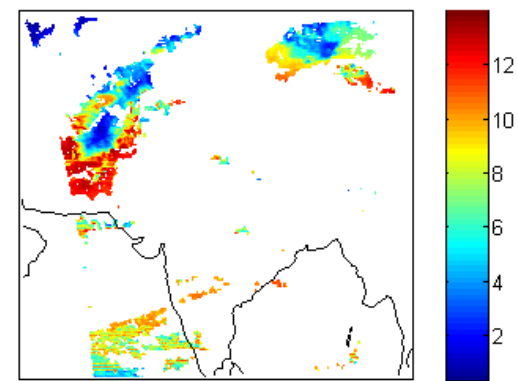
950 hPa



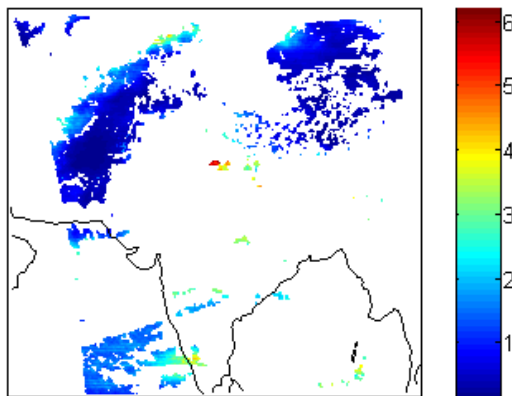
850 hPa



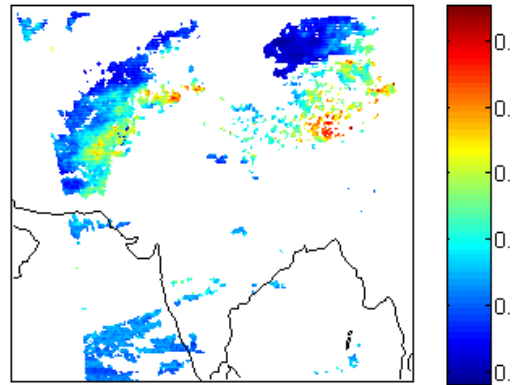
700 hPa



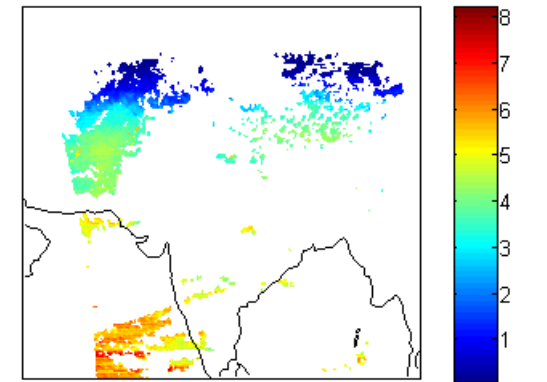
500 hPa



250 hPa

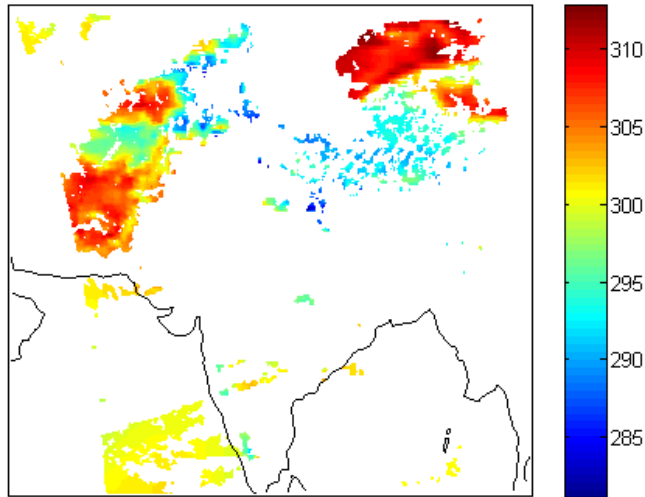


100 hPa

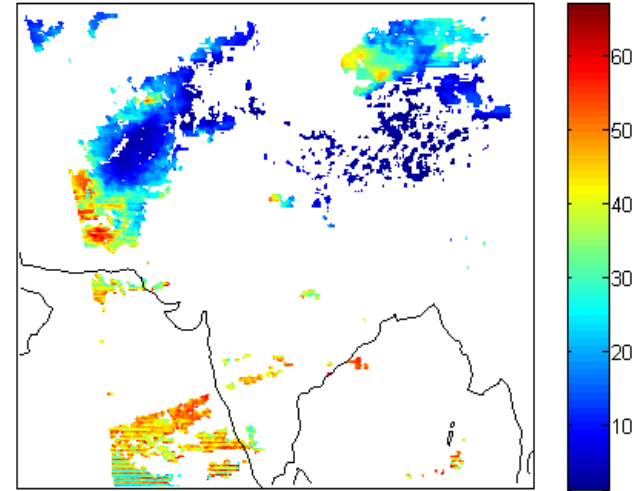


Sounder Derived Products (10 August 2013 0331 UTC)

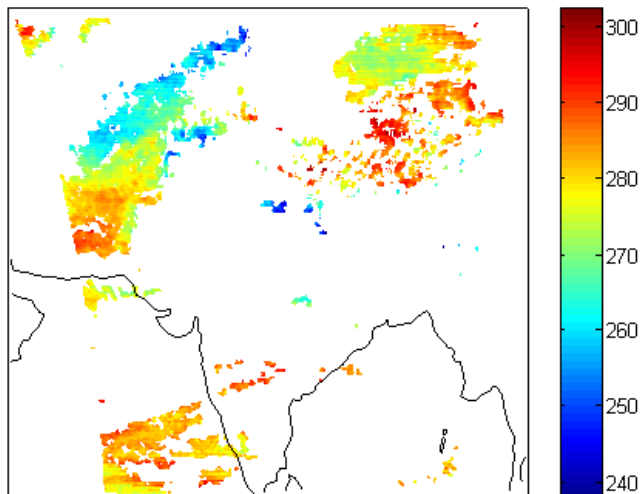
Surface Skin Temperature



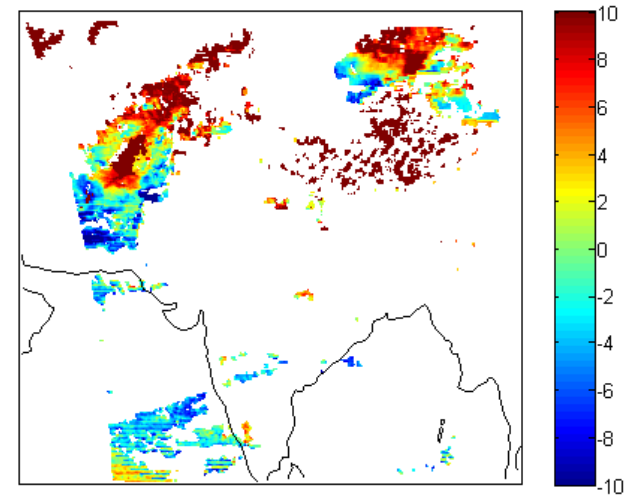
Total Precipitable Water (mm)



Total Column Ozone (Dobson)



Lifted Index



Temperature and humidity profiles at two select locations

